

saromi™
combinations unexpected



PALOMINO



Please turn over for design

PALOMINO | 501



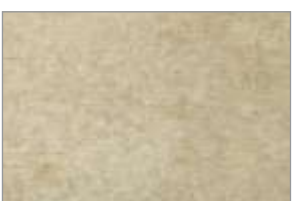
Please turn over for design

PALOMINO | 503



Please turn over for design

PALOMINO | 502



MARBLE | 703



IBIZA | 706



IBIZA | 763



SYDNEY | 903



APACHE | 912



LARGOVA | 914



IBIZA | 765



BRONX | 910



Please turn over for design

PALOMINO | 510



Please turn over for design

PALOMINO | 512



Please turn over for design

PALOMINO | 511



VELVETO | 948



IBIZA | 766



ASMARA | 710



SYDNEY | 909



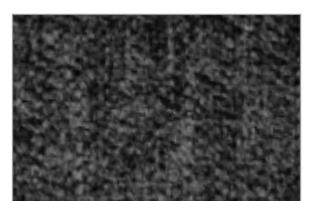
IBIZA | 774



MARBLE | 731



IBIZA | 782



BRONX | 911



Please turn over for design

PALOMINO | 507



Please turn over for design

PALOMINO | 509



Please turn over for design

PALOMINO | 508



IBIZA | 762



NEW SUEDINE | 920



IBIZA | 756



MARBLE | 725



PARAMOUNT | 918



IBIZA | 720



MARBLE | 709



AMAZON | 908



Please turn over for design

PALOMINO | 504



Please turn over for design

PALOMINO | 506



Please turn over for design

PALOMINO | 505



MARBLE | 717



AMAZON | 912



AMBER | 116



IBIZA | 731



NORWAY | 901



MARBLE | 715



AMBER | 117



IBIZA | 732

saromi™
combinations unexpected



PALOMINO

sarom™

combinations unexpected



Design	Picture	Shade No.	Width (cm)	GSM	Composition	Verti. repeat (in cm)	Hor. repeat (in cm)	Color Fastness	Abrasion Resistance	Washing Instruction	End Use
★ PALOMINO		501, 504, 507, 510.	140	360 ± 5%	100% Polyester.	9.00	9.00	4	≥ 60000	☒☒☒☒☒☒	☒☒
		502, 505, 508, 511	140	360 ± 5%	100% Polyester.	14.72	18.00	4	≥ 60000	☒☒☒☒☒☒	☒☒
		503, 506, 509, 512	140	360 ± 5%	100% Polyester.	10.93	11.01	4	≥ 60000	☒☒☒☒☒☒	☒☒

★ MADE IN INDIA

Design	Width	GSM	Composition	Color Fastness to light	Abrasion Resistance	Washing Instruction	End Use
★ IBIZA	140	360 ± 5%	100% Polyester	4	≥ 60000	☒☒☒☒☒☒	☒☒
★ MARBLE	140	370 ± 5%	100% Polyester	4	≥ 45000	☒☒☒☒☒☒	☒☒
★ VELVETO	140	350 ± 5%	100% Polyester	4.5	≥ 70000	☒☒☒☒☒☒	☒☒
BRONX	140	440 ± 5%	100% Polyester	4	≥ 20000	☒☒☒☒☒☒	☒☒
APACHE	140	450 ± 5%	100% Polyester	3.5	≥ 20000	☒☒☒☒☒☒	☒☒
PARAMOUNT	140	340 ± 5%	100% Polyester	4-5	≥ 30000	☒☒☒☒☒☒	☒☒
SYDNEY	140	400 ± 5%	100% Polyester	4	≥ 20000	☒☒☒☒☒☒	☒☒
AMBER	140	300 ± 5%	100% Polyester	4	≥ 25000	☒☒☒☒☒☒	☒☒
★ NEW SUEDINE	140	225 ± 5%	100% Polyester	3.5	≥ 35000	☒☒☒☒☒☒	☒☒
ASMARA	140	310 ± 5%	100% Polyester	4-5	≥ 30000	☒☒☒☒☒☒	☒☒
AMAZON	140	400 ± 5%	100% Polyester	3-4	≥ 20000	☒☒☒☒☒☒	☒☒
★ NORWAY	140	360 ± 5%	100% Polyester	4	≥ 60000	☒☒☒☒☒☒	☒☒
LARGOVA	140	340 ± 5%	100% Polyester	3.5	≥ 20000	☒☒☒☒☒☒	☒☒

1. We do not accept responsibility for any damage resulting from inappropriate use, chemical cleaning or additional impregnation. 2. Test results were gathered from various samples and therefore represent average indicative values. 3. Discolouration caused by clothing fabrics such as jenas does not represent a material defect. Minor colour deviations and discolouring in context of permissible industrial tolerance standards do not constitute reasons for claims.

★ MADE IN INDIA

www.sarom.co.in

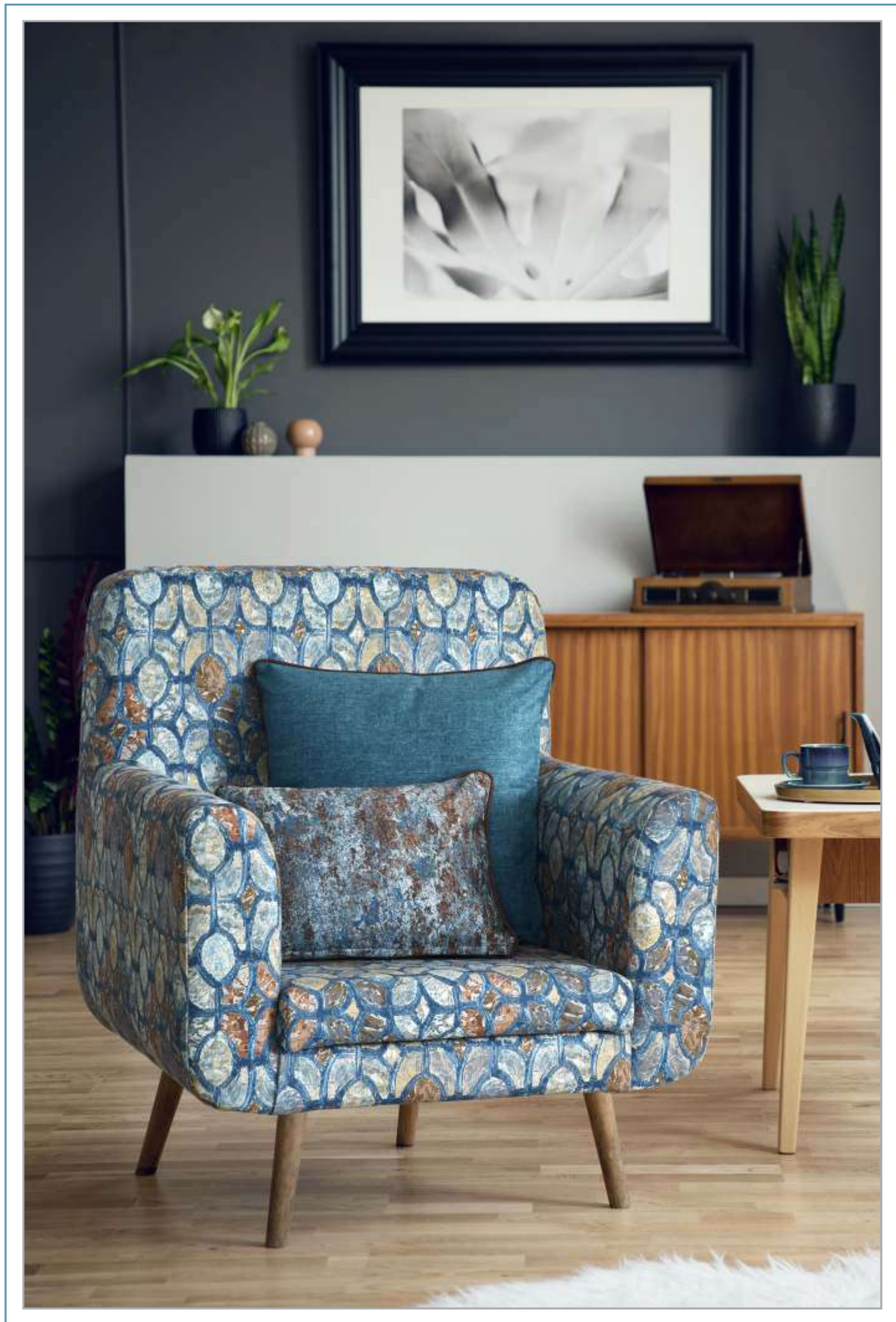
Color may vary from batch to batch

Image printed for design reference only.

[/saromfab](https://www.facebook.com/saromfab)

Complimentary Sample File. Not for Sale

saromi™
combinations unexpected



PALOMINO