

CINTHIA



matlin

Product by
sarom™
combinations unexpected



CINTHIA | 101



CINTHIA | 501



CASSIA | 144



CINTHIA | 201



CINTHIA | 601



CASSIA | 110



CASSIA | 156



CINTHIA | 301



OREA | 747



TIFFANY | 914



CINTHIA | 401



CINTHIA | 105



CINTHIA | 505



CASSIA | 131



CINTHIA | 205



CASSIA | 144



CINTHIA | 605



CASSIA | 136



CINTHIA | 305



TIFFANY | 913



TIFFANY | 920



CINTHIA | 405

CINTHIA

Inspired from Earthen tones, Neutral shades and Matt appearance.

With all the peaceful Floral prints, Geometric strips, Checks and Intangible Abstracts design; the collection translates all those mystical and magical feelings into interior design.



matlin





matlin





CINTHIA | 103



CINTHIA | 503



CASSIA | 144



CINTHIA | 603



CINTHIA | 203



CASSIA | 160



CASSIA | 107



CINTHIA | 303



OREA | 705



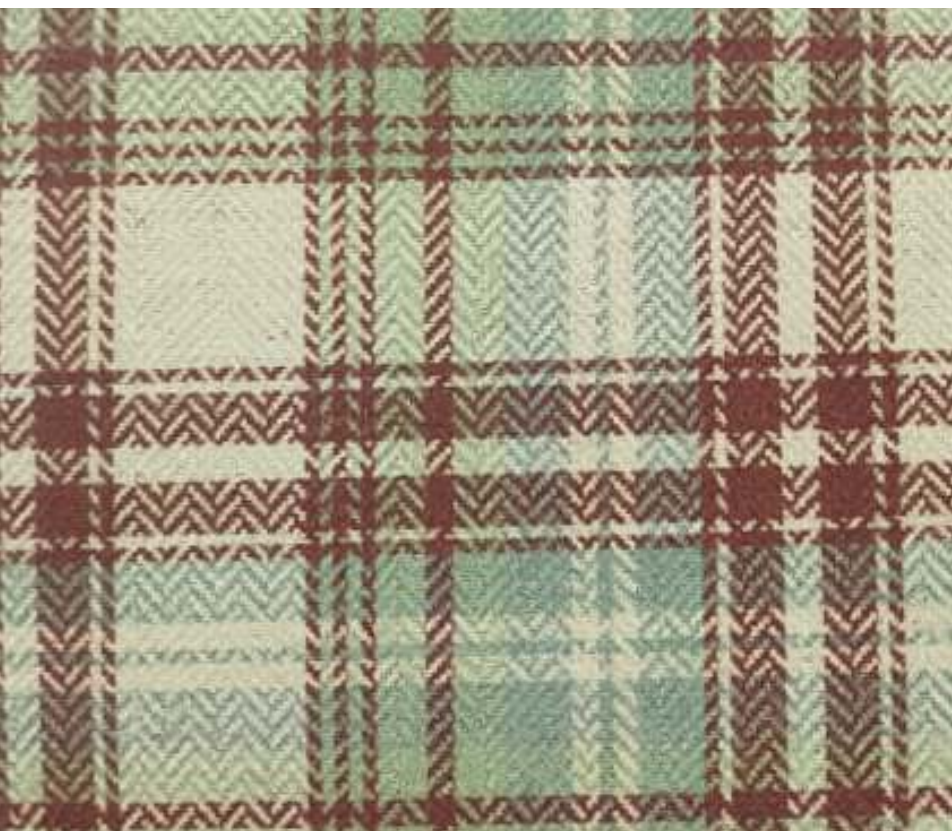
TIFFANY | 901



CINTHIA | 403



CINTHIA | 104



CINTHIA | 504



CASSIA | 173



CINTHIA | 604



CINTHIA | 204



CASSIA | 148



CASSIA | 153



CINTHIA | 304



CINTHIA | 404



OREA | 767



TIFFANY | 912

CINTHIA

Inspired from Earthen tones, Neutral shades and Matt appearance.

With all the peaceful

Floral prints, Geometric strips,

Checks and Intangible

Abstracts design;

the collection translates all those

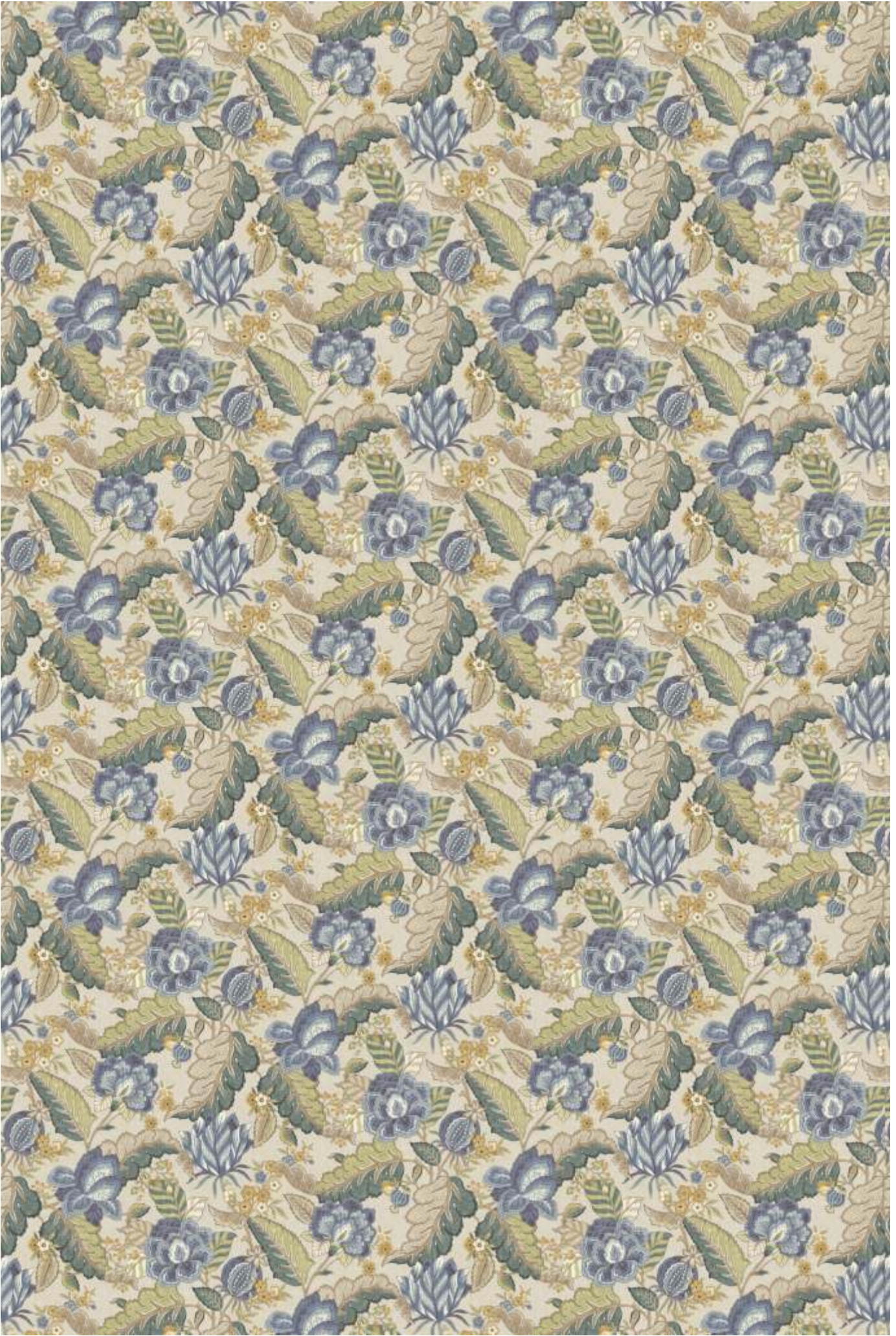
mystical and magical

feelings into interior design.



matlin





CINTHIA | 102



CINTHIA | 502



CASSIA | 136



CINTHIA | 602



CINTHIA | 202



CASSIA | 148



CASSIA | 154



CINTHIA | 302



CINTHIA | 402



OREA | 756



TIFFANY | 921



CINTHIA | 106



CINTHIA | 506



CASSIA | 158



CASSIA | 123



CINTHIA | 206



CINTHIA | 606



CINTHIA | 306



CASSIA | 121



TIFFANY | 910



OREA | 719



CINTHIA | 406



CINTHIA | 101 TO 106

WIDTH : 144 CMS
 GSM : 300
 V-REPEAT : 45.2 CMS
 H-REPEAT : 68.2 CMS
 COMPOSITION : 50%CO, 35%VIS, 15%LI
 MARTINDALE : 30,000
 COLOUR FASTNESS TO LIGHT : 4
 WASHING INSTRUCTION :
 END USE : Curtain, Upholstery & Loose Cushion



CINTHIA | 201 TO 206

WIDTH : 144 CMS
 GSM : 300
 V-REPEAT : 9.7 CMS
 H-REPEAT : 9.8 CMS
 COMPOSITION : 50%CO, 35%VIS, 15%LI
 MARTINDALE : 30,000
 COLOUR FASTNESS TO LIGHT : 4
 WASHING INSTRUCTION :
 END USE : Curtain, Upholstery & Loose Cushion



CINTHIA | 301 TO 306

WIDTH : 144 CMS
 GSM : 300
 V-REPEAT : 16 CMS
 H-REPEAT : 17 CMS
 COMPOSITION : 50%CO, 35%VIS, 15%LI
 MARTINDALE : 30,000
 COLOUR FASTNESS TO LIGHT : 4
 WASHING INSTRUCTION :
 END USE : Curtain, Upholstery & Loose Cushion



OREA

WIDTH : 142CMS
 GSM : 390
 V-REPEAT : 16.4 CMS
 H-REPEAT : 19.6 CMS
 COMPOSITION : 96%PL, 4%LI
 MARTINDALE : 1,00,000
 COLOUR FASTNESS TO LIGHT : 4
 WASHING INSTRUCTION :
 END USE : Curtain, Upholstery & Loose Cushion



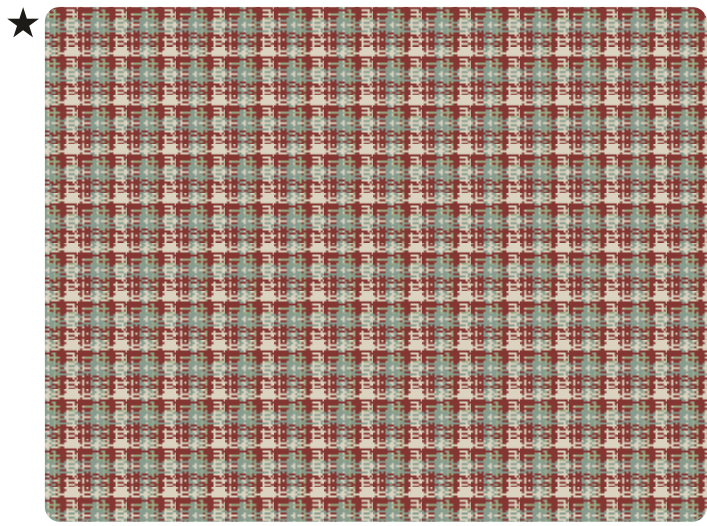
CASSIA

WIDTH : 144CMS
 GSM : 300
 V-REPEAT : N/A
 H-REPEAT : N/A
 COMPOSITION : 50%CO, 35%VIS, 15%LI
 MARTINDALE : 30,000
 COLOUR FASTNESS TO LIGHT : 4
 WASHING INSTRUCTION :
 END USE : Curtain, Upholstery & Loose Cushion



CINTHIA | 401 TO 406

WIDTH : 144 CMS
 GSM : 555
 V-REPEAT : 24.5 CMS
 H-REPEAT : 19.5 CMS
 COMPOSITION : 50%CO, 50% JUTE
 MARTINDALE : 14,000
 COLOUR FASTNESS TO LIGHT : 4
 WASHING INSTRUCTION :
 END USE : Upholstery & Loose Cushion



CINTHIA | 501 TO 506

WIDTH : 144 CMS
 GSM : 376
 V-REPEAT : 9.7 CMS
 H-REPEAT : 9.8 CMS
 COMPOSITION : 50%CO, 35%VIS, 15%LI
 MARTINDALE : 30,000
 COLOUR FASTNESS TO LIGHT : 4
 WASHING INSTRUCTION :
 END USE : Curtain, Upholstery & Loose Cushion



CINTHIA | 601 TO 606

WIDTH : 144 CMS
 GSM : 376
 V-REPEAT : STRIPE
 H-REPEAT : 11.3 CMS
 COMPOSITION : 50%CO, 35%VIS, 15%LI
 MARTINDALE : 30,000
 COLOUR FASTNESS TO LIGHT : 4
 WASHING INSTRUCTION :
 END USE : Curtain, Upholstery & Loose Cushion



TIFFANY

WIDTH : 142 CMS
 GSM : 480
 V-REPEAT : N/A
 H-REPEAT : N/A
 COMPOSITION : 100% PL
 MARTINDALE : 30,000
 COLOUR FASTNESS TO LIGHT : 4-5
 WASHING INSTRUCTION :
 END USE : Upholstery , Loose Cushion

WASHING INSTRUCTION

Wash care instructions need to be followed for prolonged usage of fabric, otherwise will damage the fabric. Test results were gathered from various samples and therefore represent average indicative values. Discolouration caused by clothing fabrics such as jeans does not represent a material defect. Minor colour deviations & discolouring in context of permissible industrial tolerance standards.

matlin

Color May Vary From Batch To Batch
Complementary Sample, Not For Sale



sarom™
combinations unexpected

/saromfab



matlin

www.sarom.co.in

[f](#) [i](#) /saromfab