

ALUVA



sarom plus



LEPAKSHI | 103



VELVETO | 949



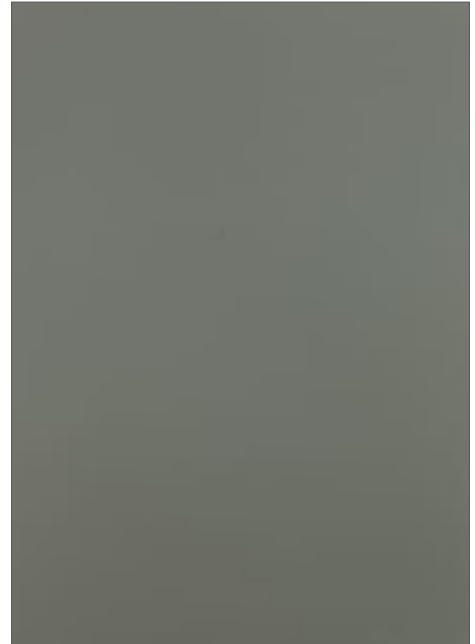
TIFFANY | 931



VARKALA | 705



ALLEPEY | 901



CASPER | 750



LEPAKSHI | 105



TIFFANY | 929



VAGATOR | 902



BELUM | 502



TIFFANY | 900



CASPER | 703



LEPAKSHI | 101



BELUM | 506



ALLEPEY | 903



VELVETO | 905



LENKA | 701



TIFFANY | 901



VARKALA | 704



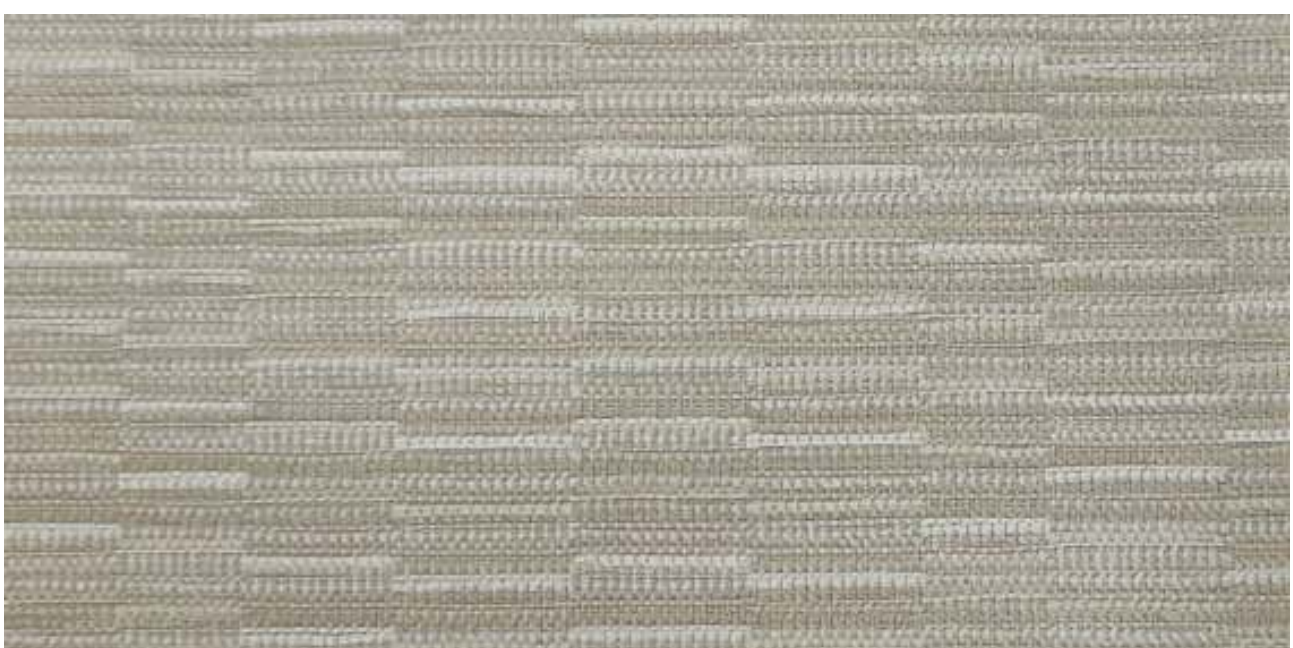
LENKA | 702



LENKA | 722



VAGATOR | 901



BELUM | 507



VARKALA | 701



LEPAKSHI | 102



TIFFANY | 904



TIFFANY | 902



BELUM | 501



BELUM | 503



TIFFANY | 924



VELVETO | 910



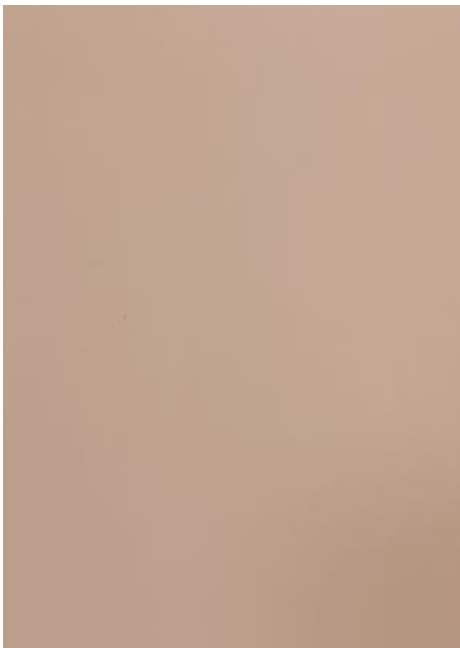
CASPER | 725



VAGATOR | 903



KOCHI | 101



CASPER | 726



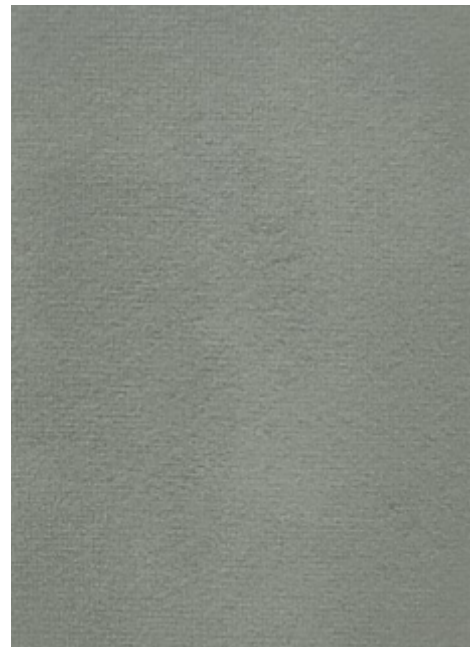
SOFFICE | 902



VARKALA | 702



LEPAKSHI | 104



VELVETO | 942



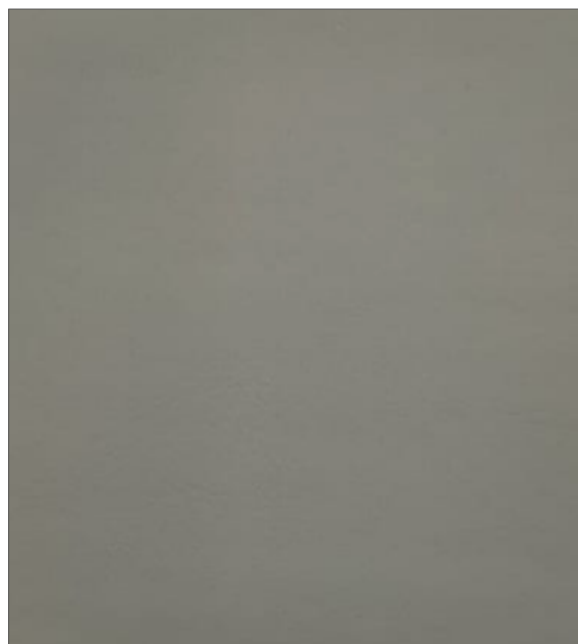
CASPER | 717



SOFFICE | 908



BELUM I | 505



CASPER | 749



VAGATOR | 905



CASPER | 715



TIFFANY | 909



ALLEPEY | 902



VARKALA | 703



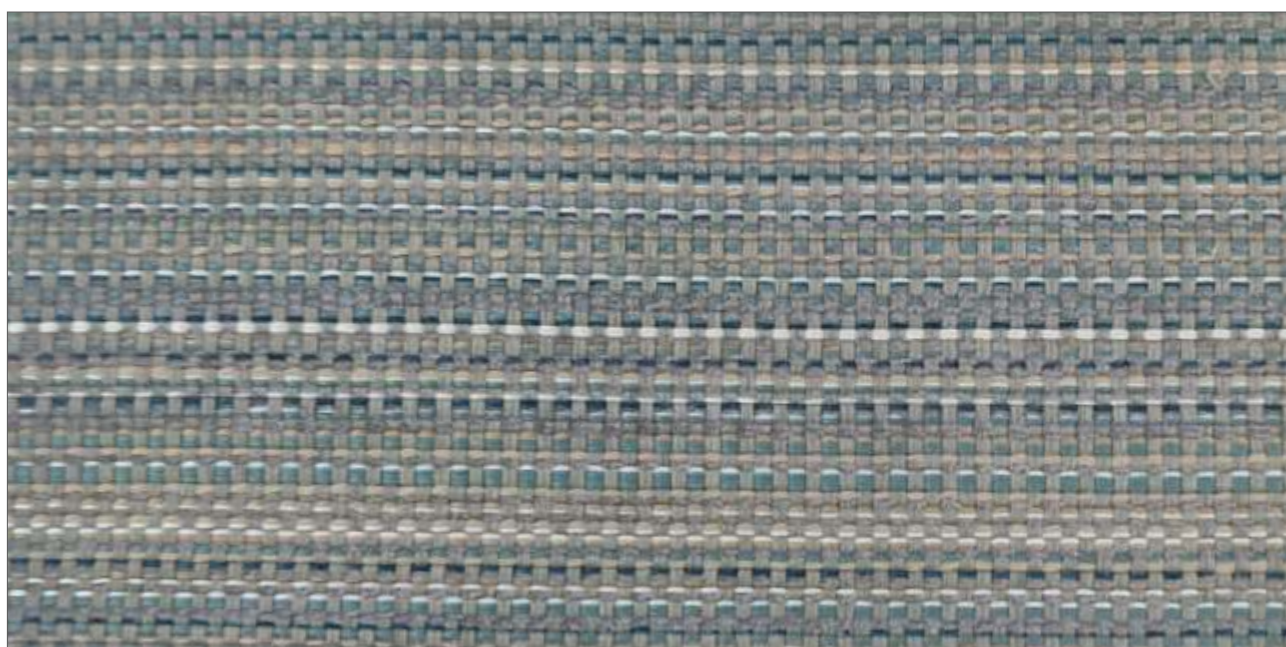
VAGATOR | 904



CASPER | 729



VELVETO | 952



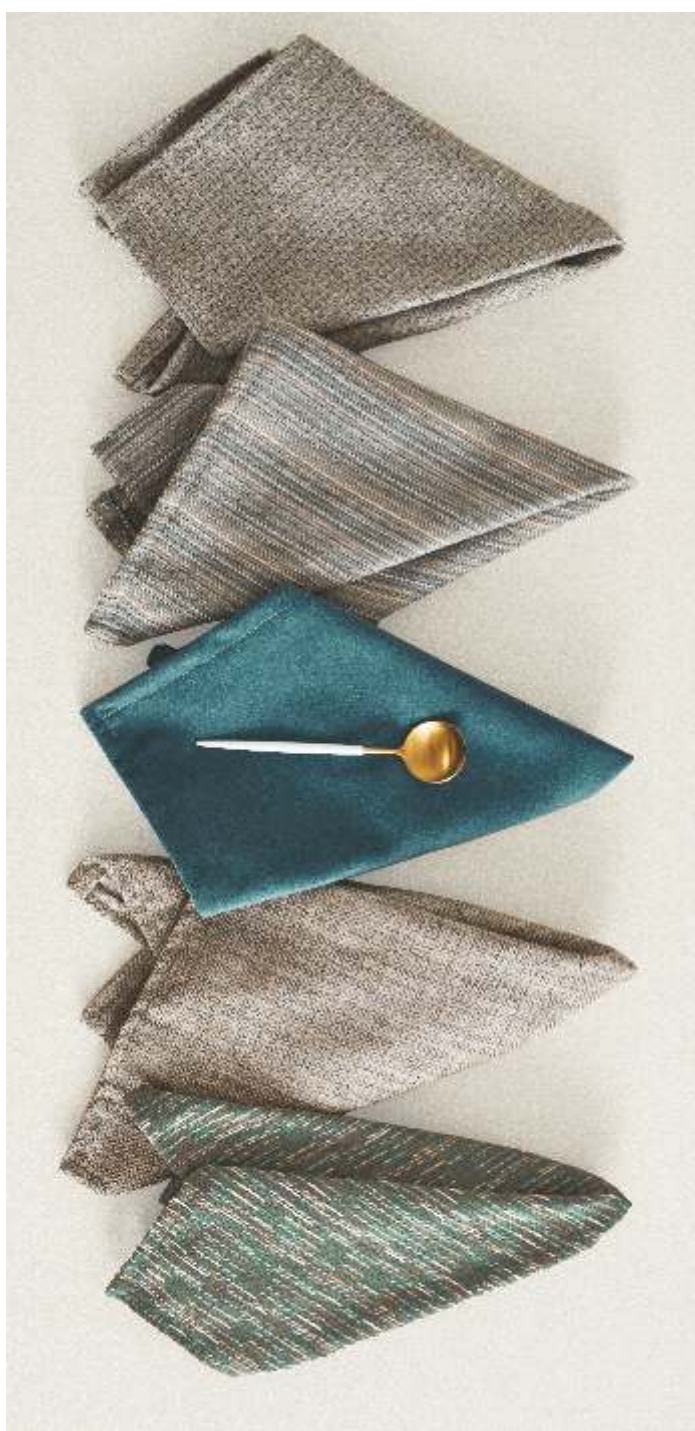
KOCHI | 102



TIFFANY | 916



TIFFANY | 914



BELUM | 504



ALUVA

Wash Care Instructions

Wash care instructions need to be followed for prolonged usage of fabric, otherwise will damage the fabric. Test results were gathered from various samples and therefore represent average indicative values. Discolouration caused by clothing fabrics such as jeans does not represent a material defect. Minor colour deviations & discolouring in context of permissible industrial tolerance standards.

DESIGN	WIDTH	GSM	COMPOSITION	V REPEAT	H REPEAT	COLOR FASTNESS TO LIGHT	MARTINDALE	WASHING INSTRUCTION	END USE
★ ALLEPEY	143	420	100%POLYESTER	4.5	STRIPE	4	95000	🚫🚫🚫🚫🚫🚫	🛋️🛋️
★ BELUM	143	380	100%POLYESTER	36.5	17.5	4	75000	🚫🚫🚫🚫🚫🚫	🛋️🛋️
★ KOCHI	143	452	91%POLYESTER + 9% COTTON	10	STRIPE	4	93000	🚫🚫🚫🚫🚫🚫	🛋️🛋️
★ LEPAKSHI	143	424	95%POLYESTER + 5% VISCOSE	NA	NA	4	100000	🚫🚫🚫🚫🚫🚫	🛋️🛋️
★ VARKALA	143	342	100%POLYESTER	NA	NA	4	59000	🚫🚫🚫🚫🚫🚫	🛋️🛋️
★ VAGATOR	143	372	86%POLYESTER + 14% VISCOSE	3.5	4	4	50000	🚫🚫🚫🚫🚫🚫	🛋️🛋️
CHERRY	140	720	100%PVC	NA	NA	4	300000	🚫🚫	🛋️🛋️
LENKA	140	340	100%POLYESTER	NA	NA	4	20000	🚫🚫🚫🚫🚫🚫	🛋️🛋️
SOFFICE	140	380	100%POLYESTER	NA	NA	4	25000	🚫🚫🚫🚫🚫🚫	🛋️🛋️
TIFFANY	142	480	100%POLYESTER	NA	NA	4-5	30000	🚫🚫🚫🚫🚫🚫	🛋️🛋️
★ VELVETO	140	350	100%POLYESTER	NA	NA	4-5	70000	🚫🚫🚫🚫🚫🚫	🛋️🛋️

WASHING INSTRUCTION

- 🚫 Don't wash
- 🚫 Don't Bleach
- 🚫 Don't Tumble
- 🚫 Iron 2 Dot
- 🚫 Iron 1 Dot
- 🚫 Don't Iron
- 🚫 Wash at 40 degree
- 🚫 Dry Clean
- 🚫 Vacuum Clean
- 🚫 Hang Dry
- 🚫 Wet Cloth Mopping

END USE

- 🛋️ Upholstery
- 🛋️ Cushion

Color may vary from batch to batch
Complimentary Sample, Not For Sale

www.sarom.co.in
www.sarom.info
[/saromfab](https://www.facebook.com/saromfab)



Product Color May Slightly Vary From Original Due To Photographic Lighting Sources Or Your Screen Settings.